

# Metsec (voestalpine Metsec)



Broadwell Road, Oldbury, West Midlands, B69 4HF

[www.metsec.com](http://www.metsec.com)

Tel: 07710770900

[david.atkinson@voestalpine.com](mailto:david.atkinson@voestalpine.com)

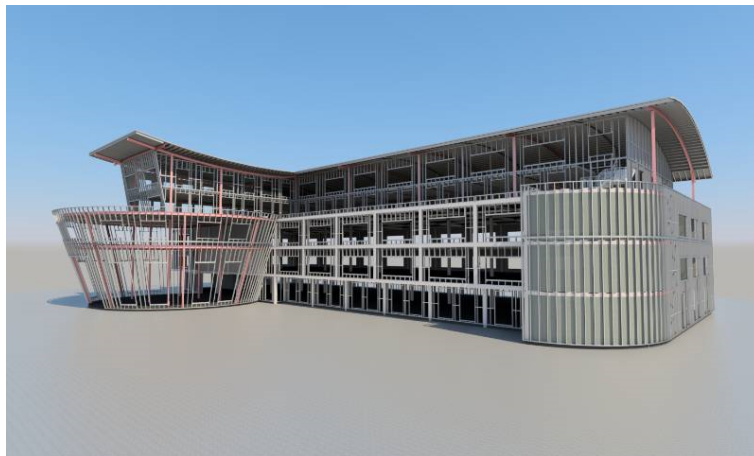
---

## CPD Overview

---

voestalpine Metsec is the UK's largest designer and manufacturer of cold-rolled steel systems for the building industry, providing a range of innovative products which deliver high performance, efficient and economic construction solutions. The company produces Metframe and SFS framing systems, bespoke cold-rolled sections, purlins, dry lining and cable management systems from its Oldbury headquarters in the West Midlands. Supported by a renowned in-house design and technical team, these products deliver value-engineered solutions for a wide variety of projects throughout the building industry, from distribution centres to high-rise apartments, data centres to sports stadiums.

A market-leader in the digitisation of construction, voestalpine Metsec has developed software packages to assist customers with product specification, including MetSPEC and DesignSPEC. The company is also at the forefront of Building Information Modelling, being the first tier two designer and manufacturer to hold BIM Level 2 accreditation and one of the first to achieve the PAS 1192-2 kitemark from the British Standards Institution.



---

## Available CPD Material (2)

---



Multiple formats

### A Modern Method of Construction Using 2D Primary Structural Steel Panels

This CPD aims to provide an introduction of a Modern Method of Construction using pre-panelised offsite lightweight cold rolled steel frame panels. Focussing on solutions for the residential market covering the benefits in using this modern method of construction, the structural elements of the system, the design and site programmes, system performance and technical details.

By the end of the CPD you should have a greater understanding of:

- The suitability, application and installation of an offsite, pre-panelised lightweight cold rolled steel frame system.
- The features and benefits of the system, including flexibility to achieve architectural requirements.
- Achieving compliance with Building Regulations, Insurers and Clients requirements
- Resources available to assist with the specification of the system.

Material type: Online Learning, Seminar

RIBA Core Curriculum: **Design, construction and technology**

Knowledge level: General Awareness

---



Multiple formats

### Design Guide For SFS (Steel Framing Systems)

This seminar will look at the various SFS systems and their applications. We will review how the systems comply with building regulations, particularly in relation to fire performance. A review of the design process will demonstrate the various stages of specification and how they assist design teams achieve their aesthetic and performance targets.

Material type: Online Learning, Seminar

RIBA Core Curriculum: **Design, construction and technology**

Knowledge level: General Awareness

---

---

## Classifications

---

### Subject/Product Areas (CI/SfB)

Building systems

Building systems > Steel framed systems

Structure

Structure > Steel structures

### RIBA Core Curriculum areas

Design, construction and technology

Knowledge level: *General Awareness*